



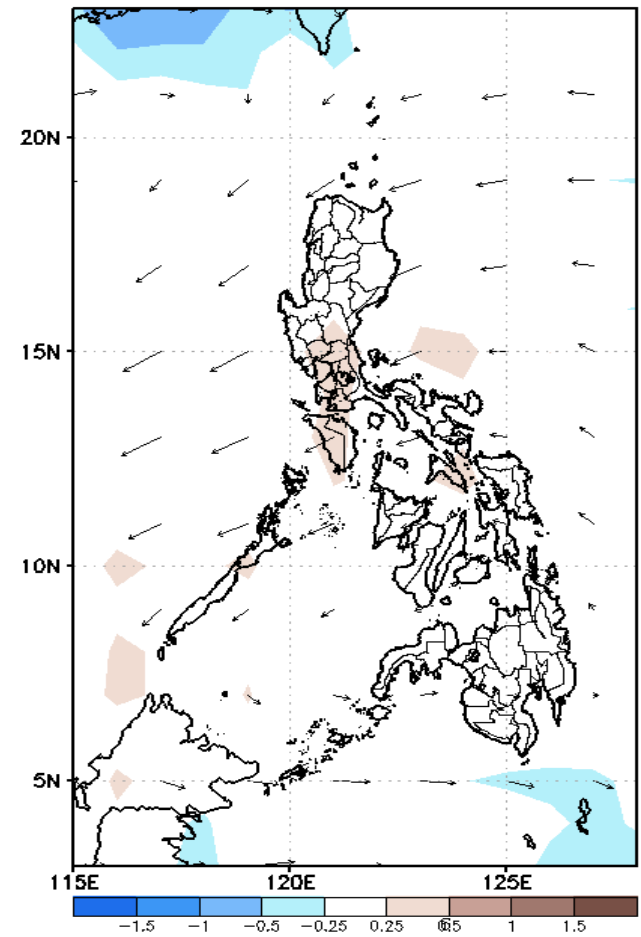
Week 1 & Week 2 Forecast for the Philippines using GEFS Model



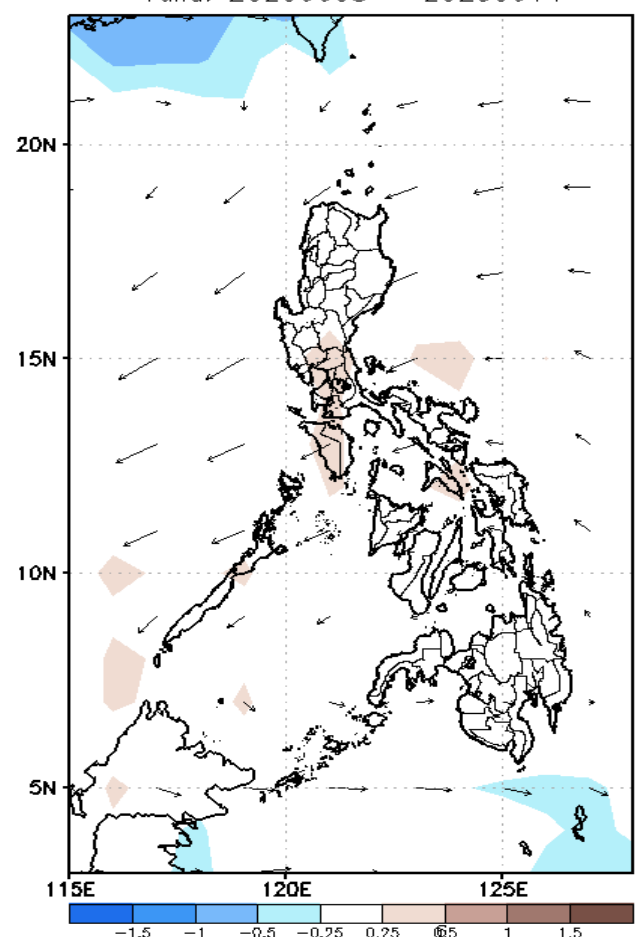
GEFS Week-1 Forecasts: Divergence & Wind Anomaly

Week 1: June 08-14, 2020

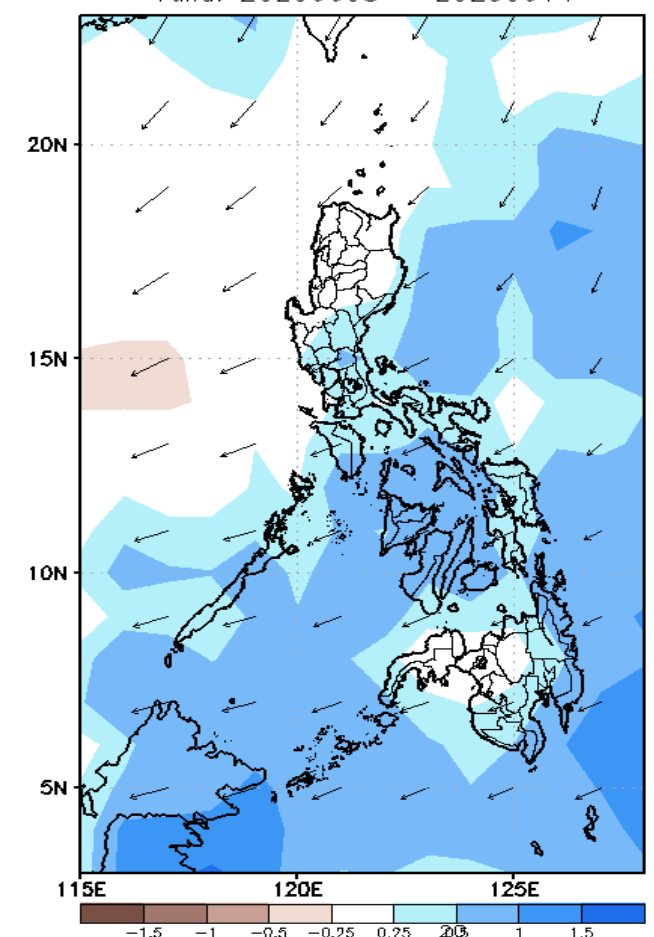
GEFS Week-1 850-hPa Divergence and Wind Anom
Valid: 20200608 - 20200614



GEFS Week-1 700-hPa Divergence and Wind Anom
Valid: 20200608 - 20200614



GEFS Week-1 200-hPa Divergence and Wind Anom
Valid: 20200608 - 20200614



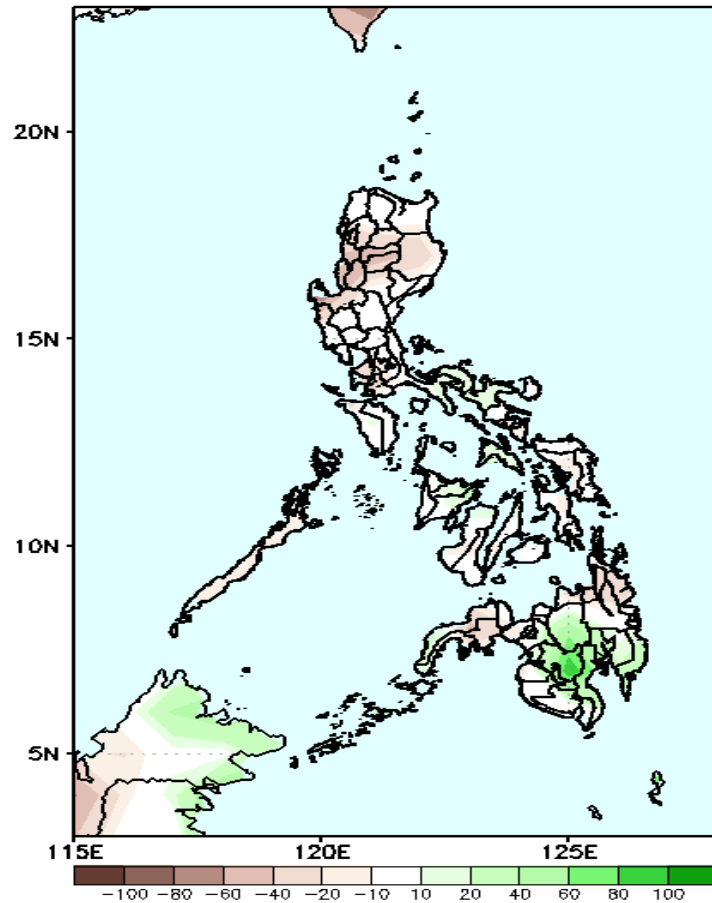
Upper level (200 hPa) Divergence suggest likelihood of precipitation in most parts of central and southern Luzon, NCR, most of Visayas and eastern and southern Mindanao. Easterlies affecting most parts of Luzon and Visayas while southwest windflow affecting Mindanao during the forecast period.



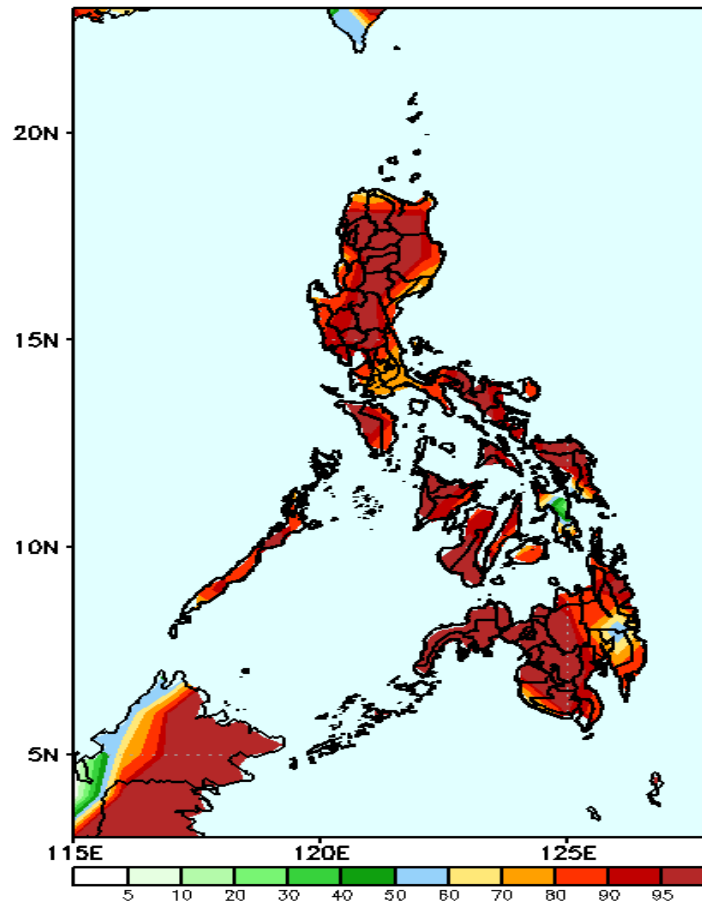
Precipitation Anomaly and Exceedance Probability > 25/50 mm

Week 1: June 08-14, 2020

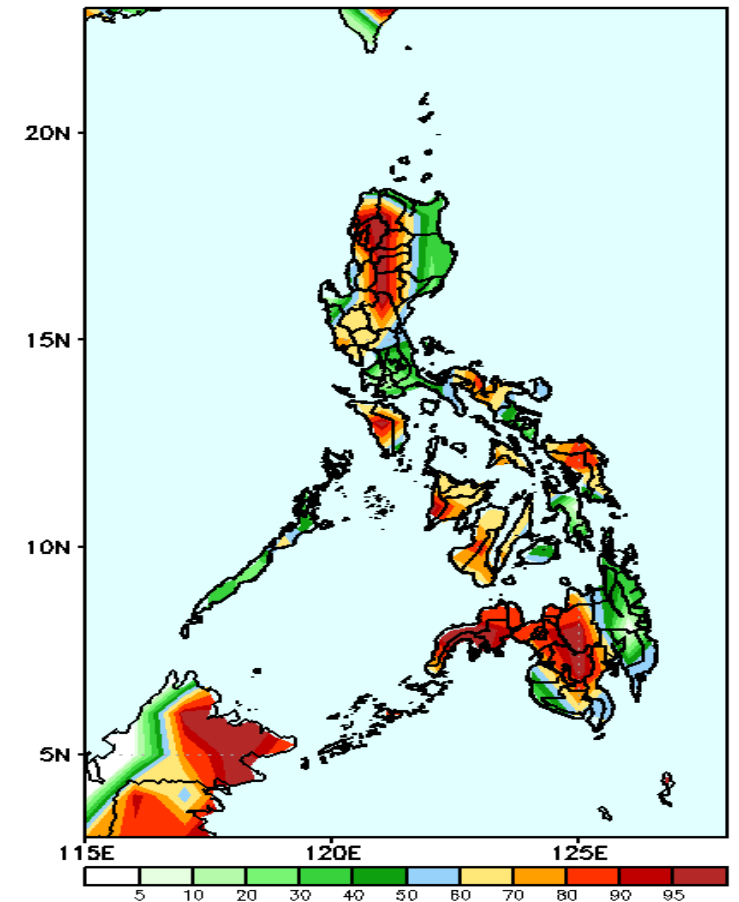
GEFS Week-1 Precip Anomaly
Valid: 20200608 - 20200614



GEFS Week-1 Exceedance Prob. > 25mm
Valid: 20200608 - 20200614



GEFS Week-1 Exceedance Prob. > 50mm
Valid: 20200608 - 20200614



Rainfall deficit of up to 30mm in Luzon is expected while 10-60mm increase of rainfall in central Mindanao during the forecast period.

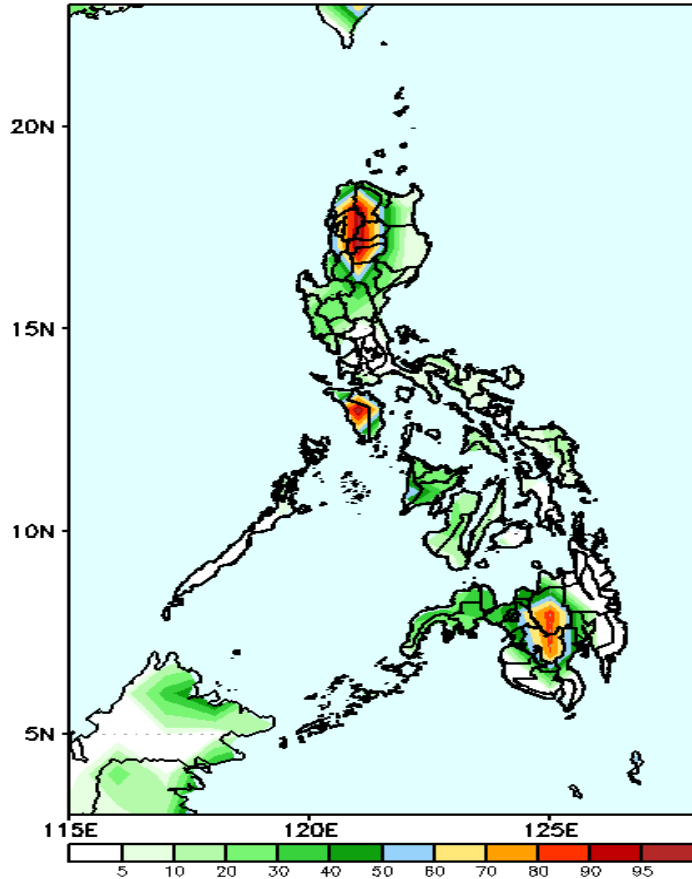
High probability of rainfall to exceed 25mm in most parts of the country.

High probability of rainfall to exceed 50mm in most parts of Luzon (except Cagayan Valley), in Samar provinces and western Visayas, and northern & western Mindanao (including Zamboanga Peninsula) while less likely for the rest of the country during the forecast period.

Exceedance Probability > 100/150/200 mm

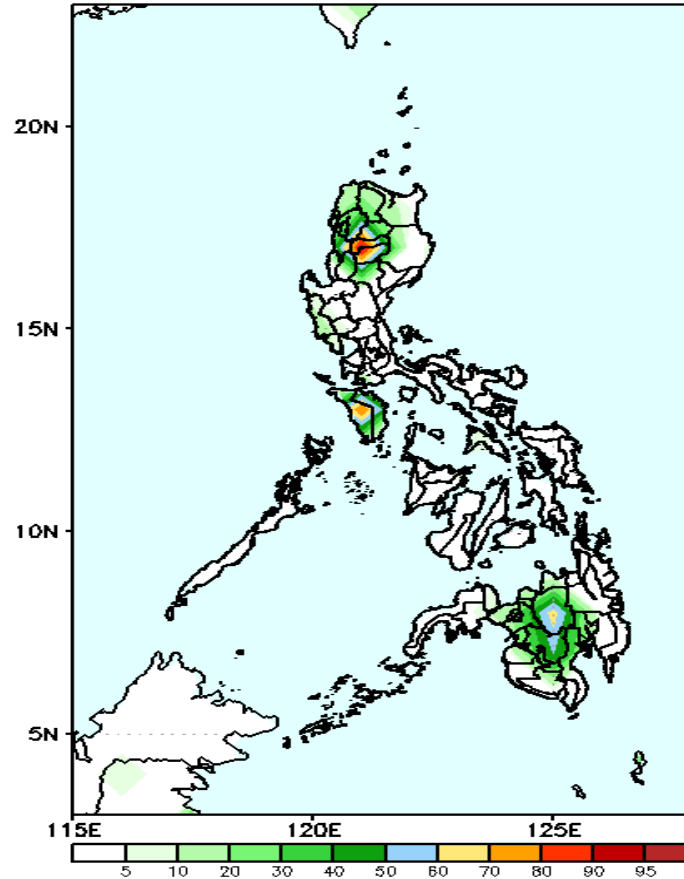
Week 1: June 08-14, 2020

GEFS Week-1 Exceedance Prob. > 100mm
Valid: 20200608 - 20200614



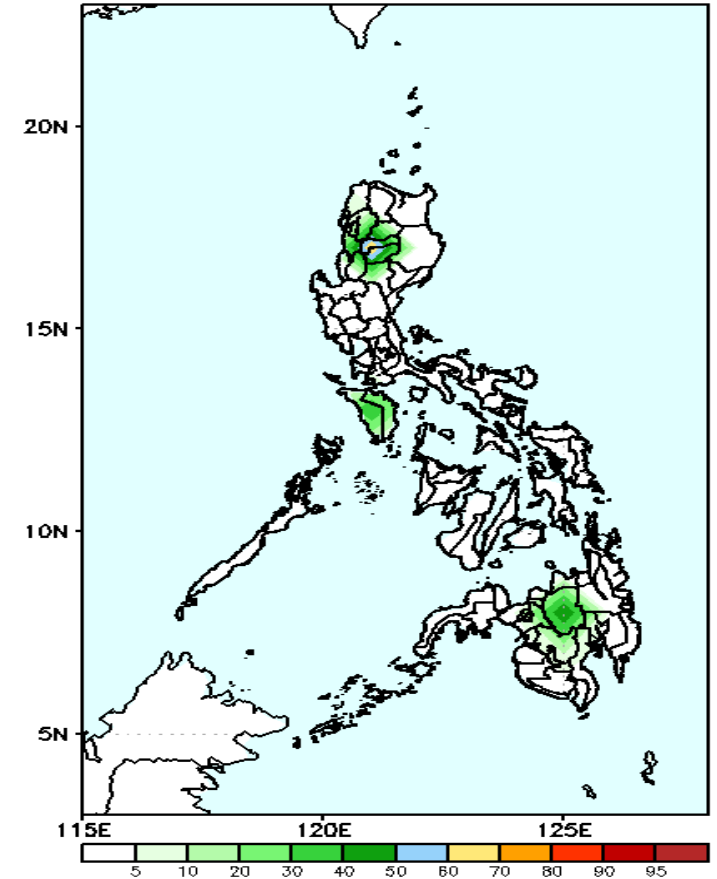
High probability of rainfall to exceed 100mm in Cordillera Region, Mindoro, in Bukidnon and North Cotabato while less likely for the rest of the country during the forecast period.

GEFS Week-1 Exceedance Prob. > 150mm
Valid: 20200608 - 20200614



40-90% probability of rainfall to exceed 150mm in Cordillera Region, Mindoro and central Mindanao while less likely for the rest of the country during the forecast period.

GEFS Week-1 Exceedance Prob. > 200mm
Valid: 20200608 - 20200614



Less probability of rainfall to exceed 200mm in most parts of the country during the forecast period.

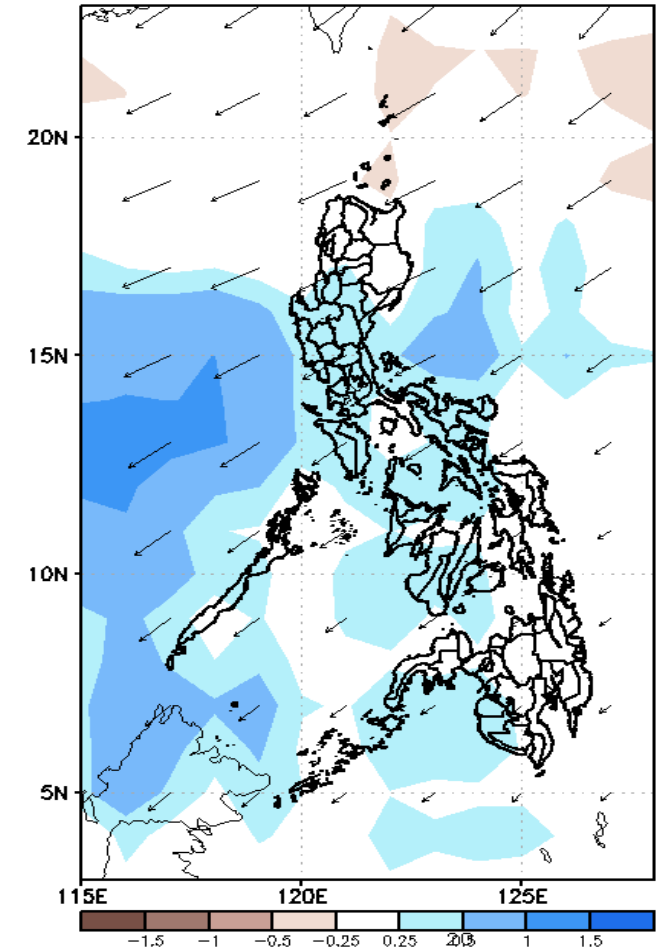
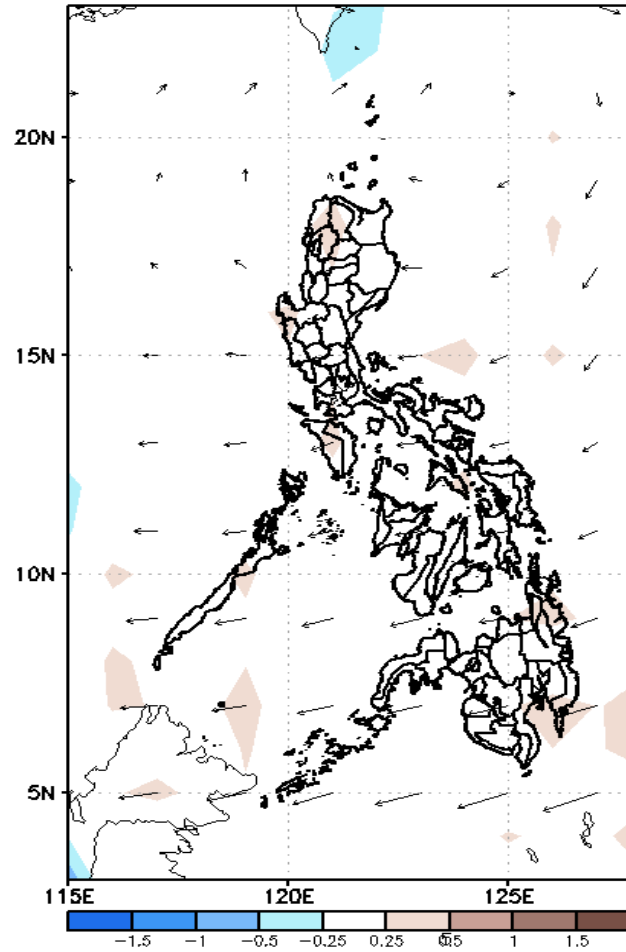
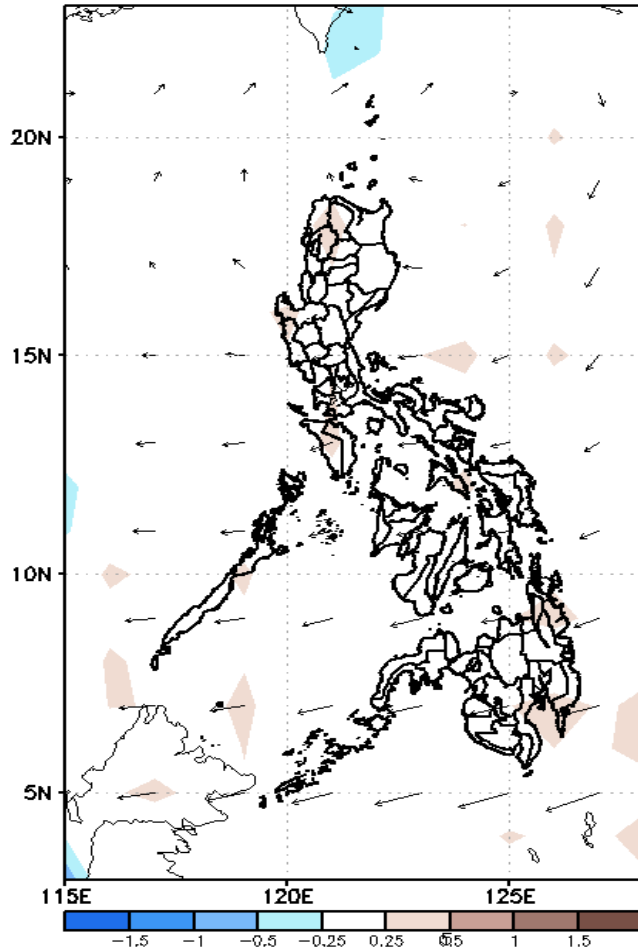
GEFS Week-2 Forecasts: Divergence & Wind Anomaly

Week 2: June 15-21, 2020

GEFS Week-2 850-hPa Divergence and Wind Anom
Valid: 20200615 - 20200621

GEFS Week-2 700-hPa Divergence and Wind Anom
Valid: 20200615 - 20200621

GEFS week-2 200-hPa Divergence and Wind Anom
Valid: 20200615 - 20200621



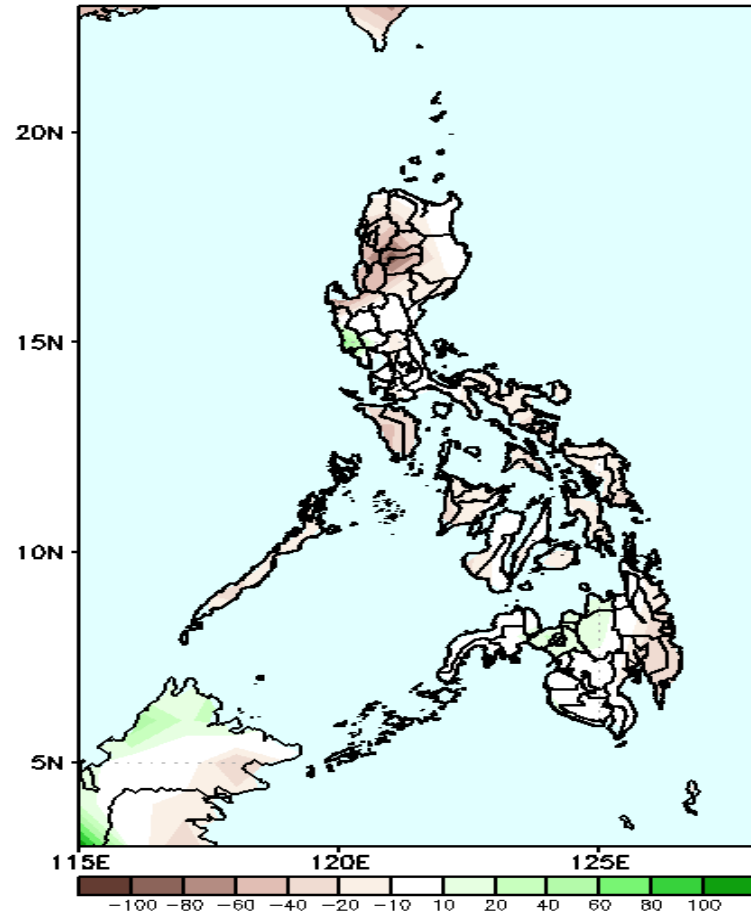
Upper level (200 hPa) Divergence suggest likelihood of precipitation in most parts of central and southern Luzon, NCR, western and central Visayas and western and southern Mindanao. Easterlies affecting most parts of the country during the forecast period.



Precipitation Anomaly and Exceedance Probability > 25/50 mm

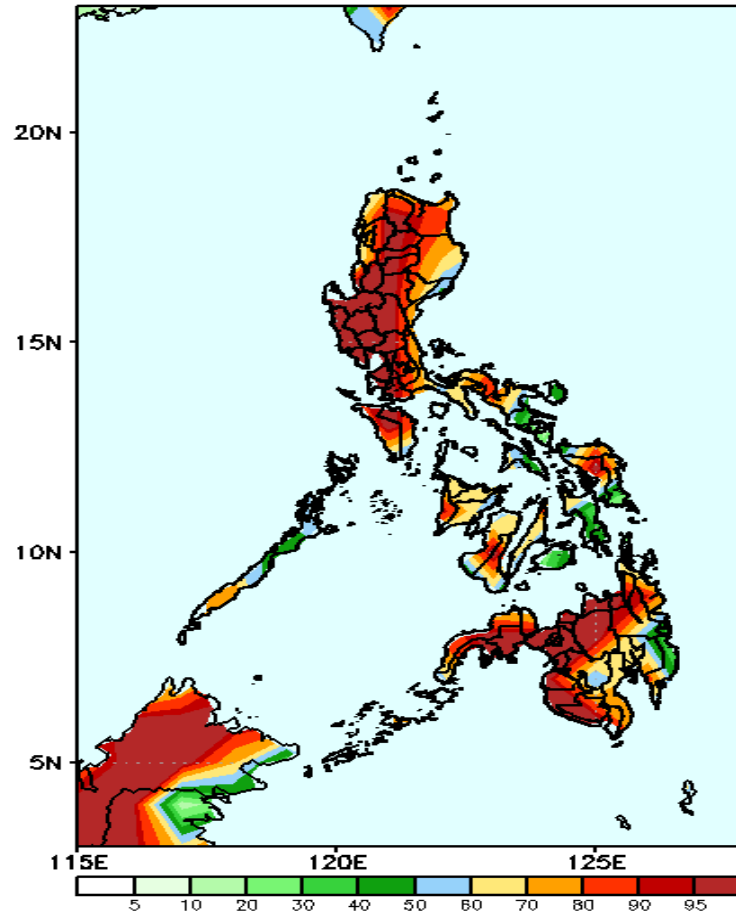
Week 2: June 15-21, 2020

GEFS Week-2 Precip Anomaly
Valid: 20200615 - 20200621



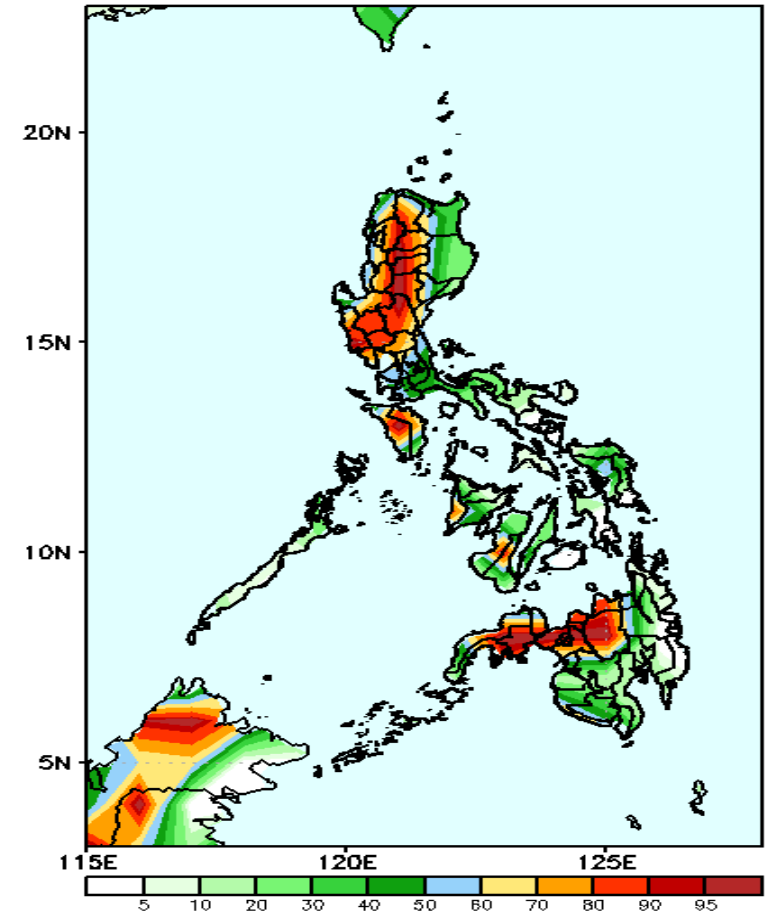
Rainfall deficit of up to 70mm is expected in Luzon while up to 20mm rainfall deficit for the rest of the country during the forecast period.

GEFS Week-2 Exceedance Prob. > 25mm
Valid: 20200615 - 20200621



High probability of rainfall to exceed 25mm in most parts of the country except in southern part of Bicol Region, Bohol, southern Leyte and Davao Region during the forecast period.

GEFS Week-2 Exceedance Prob. > 50mm
Valid: 20200615 - 20200621

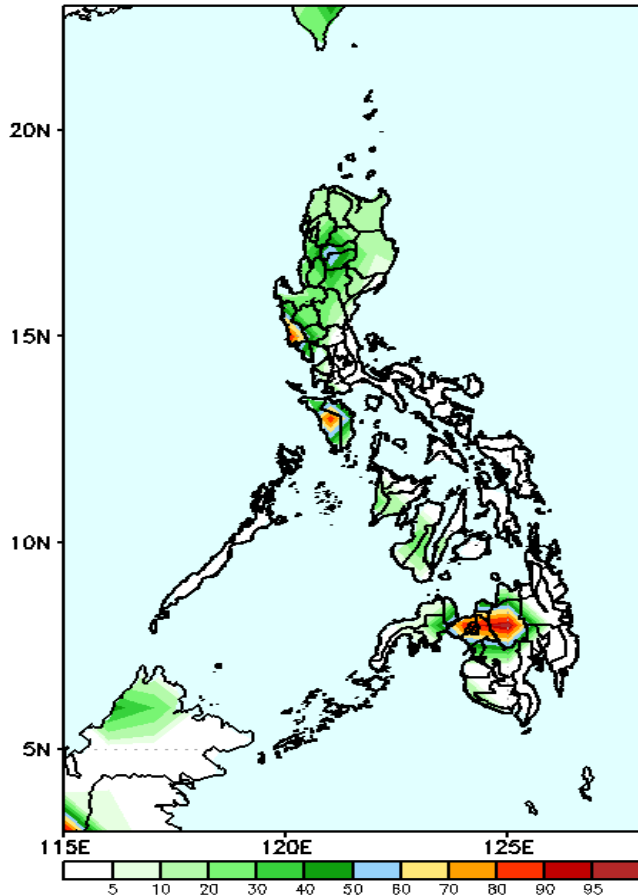


High probability of rainfall to exceed 50mm in western Luzon, Mindoro and northern Mindanao & Zamboanga Peninsula while less likely for the rest of the country during the forecast period.

Exceedance Probability > 100/150/200 mm

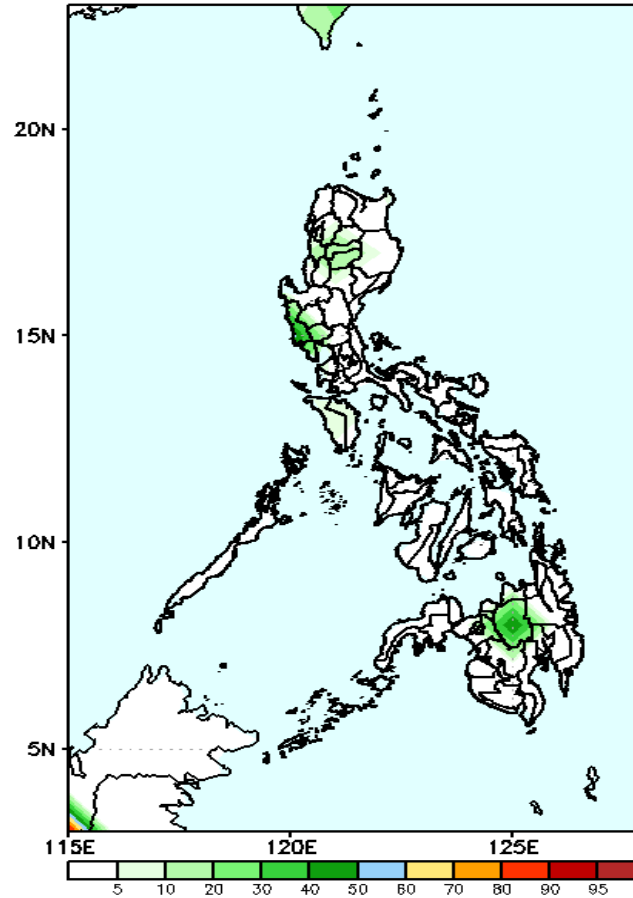
Week 2: June 15-21, 2020

GEFS Week-2 Exceedance Prob. > 100mm
Valid: 20200615 - 20200621



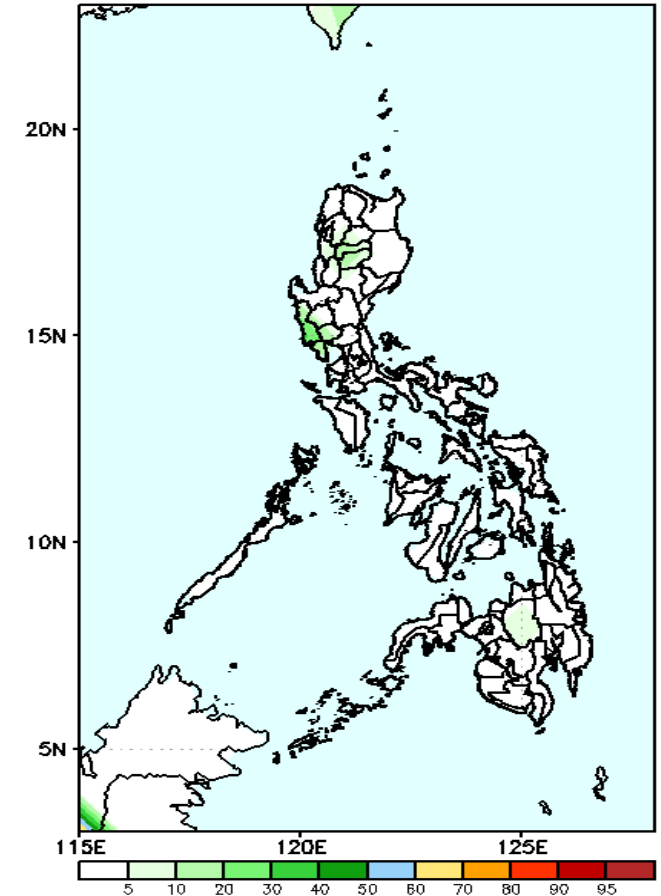
High probability of rainfall to exceed 100mm in northern Mindanao while less likely for the rest of the country during the forecast period.

GEFS Week-2 Exceedance Prob. > 150mm
Valid: 20200615 - 20200621



Less probability of rainfall to exceed 150mm in most parts of the country during the forecast period.

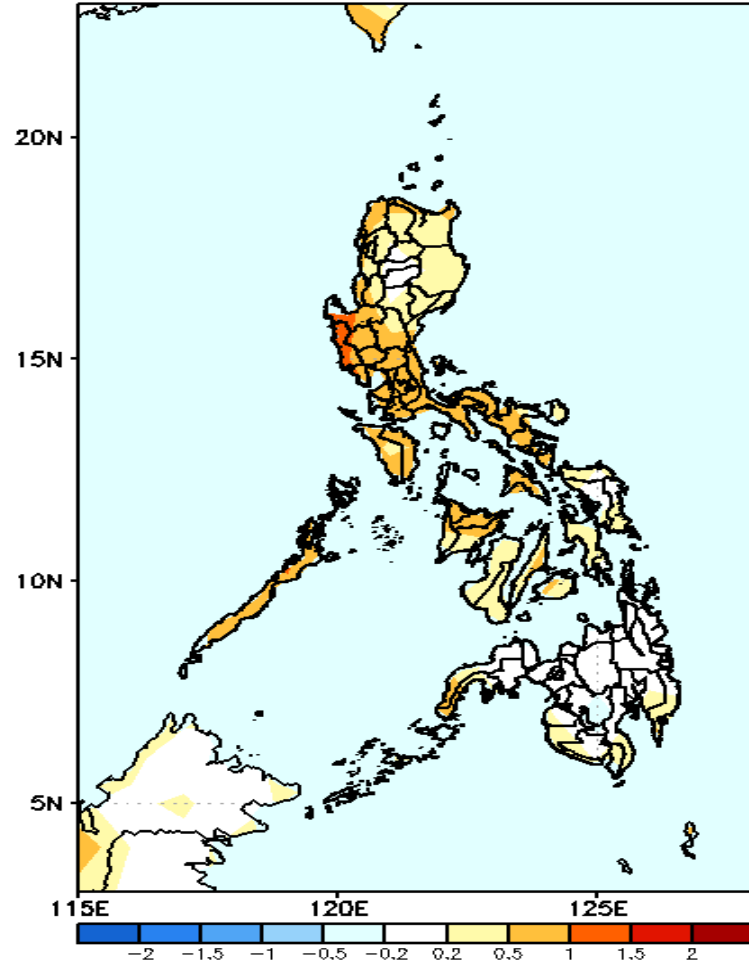
GEFS Week-2 Exceedance Prob. > 200mm
Valid: 20200615 - 20200621



Less probability of rainfall to exceed 200mm in most parts of the country during the forecast period.

GEFS Week-1 & 2 Forecasts: T2m Anomaly

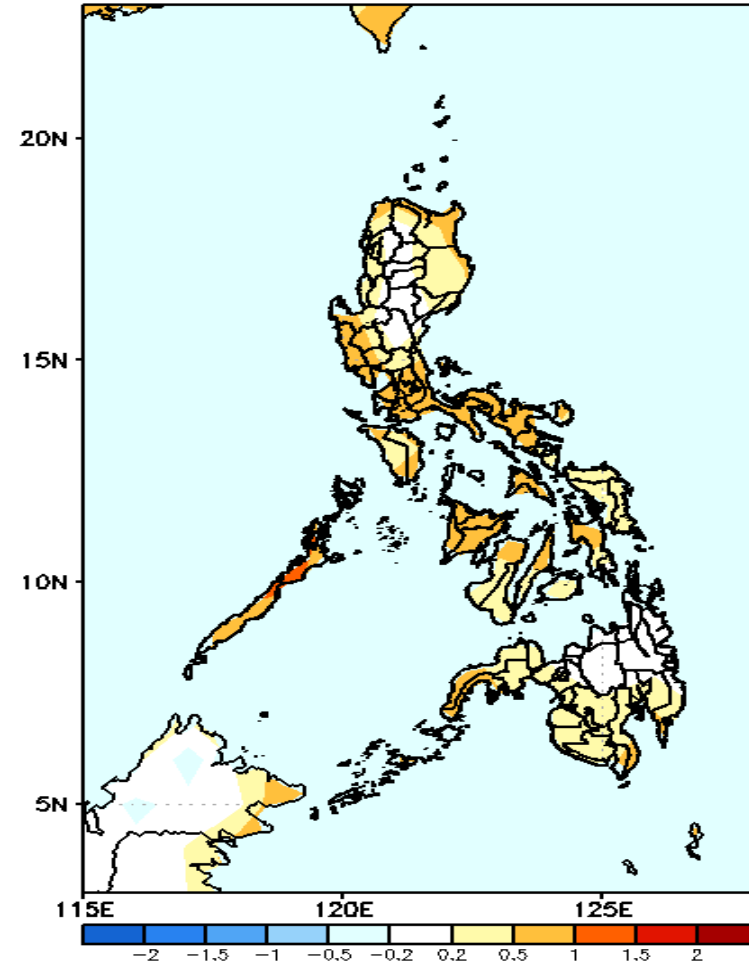
GEFS Week-1 T2m Anomaly
Valid: 20200608 - 20200614



2m Temperature Week 1: June 08-14, 2020

Slightly warmer to warmer than average surface air temperature will likely experience in Luzon and Visayas while average surface air temperature is expected in Mindanao during the forecast period.

GEFS Week-2 T2m Anomaly
Valid: 20200615 - 20200621



2m Temperature Week 2: June 15-21, 2020

Average to slightly warmer than average surface air temperature will likely experience in most parts of the country during the forecast period.